

## The New Cinerent Crane - Available Now!

Cinerent presents the ultra-lightweight carbon fiber camera crane **swissjib** - built without any compromises.

**swissjib** has been constructed and designed for use with a remote controlled camera.

**swissjib** opens up a new and innovative application for film and video.

**swissjib** can be mounted on both the Hotdog-Dolly and on the Swiss-Dolly and is of course compatible with other cinerent products.

**swissjib** is also compatible with products from other manufacturers (Elemack, Panther, etc.)

**swissjib** is an easily operated device which has the following features:

**swissjib** can be transported, erected and operated by one or two people.

**swissjib** can be assembled without tools. Assembly errors are avoided through a logical assembly process.

**swissjib**'s fast action locking system of the arm elements and the flexible length adjustment of the rod ensure a minimum conversion time for the various applications. Arm lengths are 2, 4, 6, 8 and 10 meters.

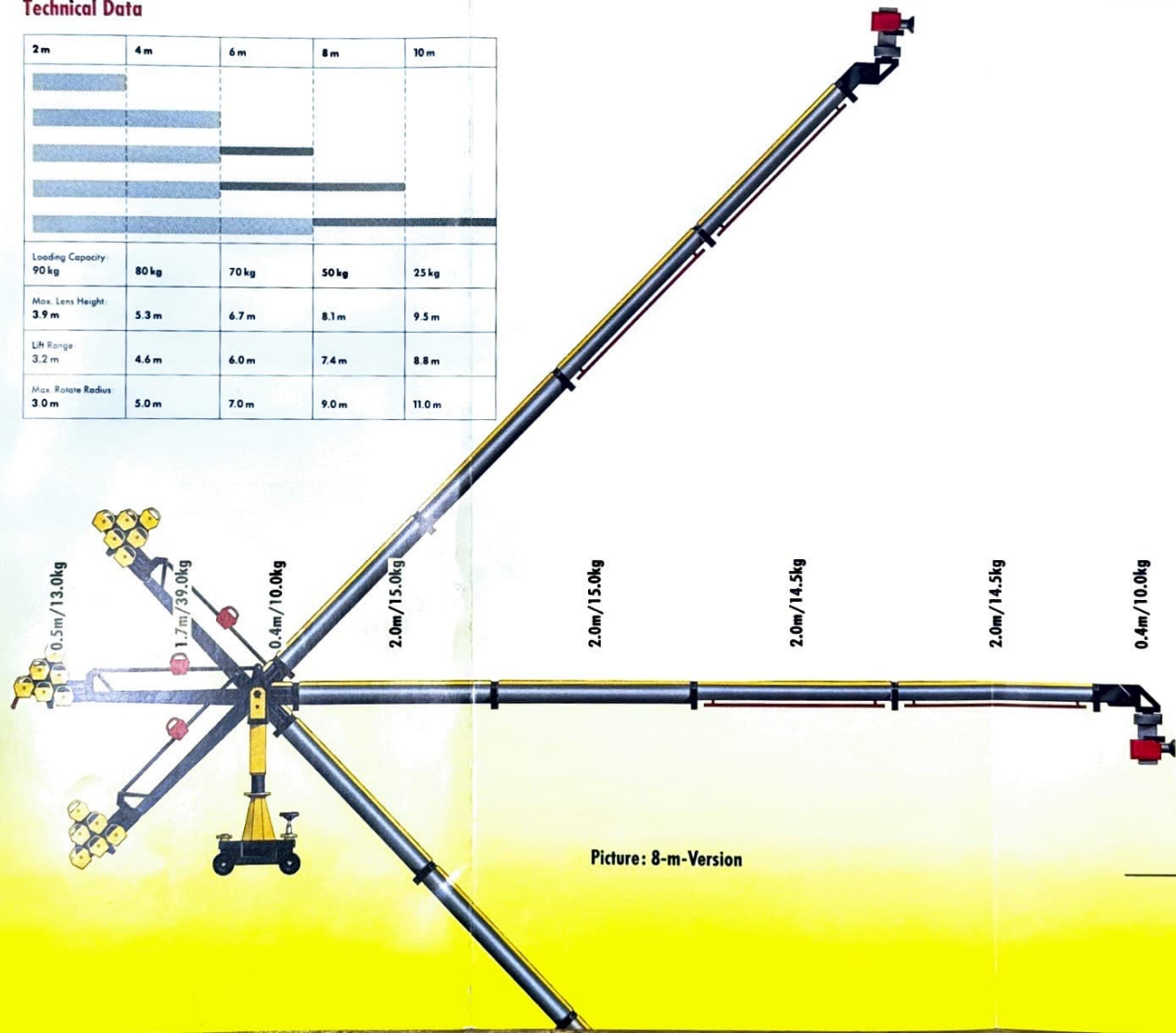
**swissjib**'s compact design reduces the transport volume to a minimum, and as no element is no longer than 2.0 meters, **swissjib** can be transported in a station wagon.

**swissjib**'s low weight is achieved through the use of high-tech materials (e.g. carbon fibers) and up-to-date engineering.

**swissjib**'s corrosion-resistant materials and excellent workmanship guarantee a long life and retention of value.

## Technical Data

	2 m	4 m	6 m	8 m	10 m
Loading Capacity:	90 kg	80 kg	70 kg	50 kg	25 kg
Max. Lens Height:	3.9 m	5.3 m	6.7 m	8.1 m	9.5 m
Lift Range:	3.2 m	4.6 m	6.0 m	7.4 m	8.8 m
Max. Rotate Radius:	3.0 m	5.0 m	7.0 m	9.0 m	11.0 m



Picture: 8-m-Version

Maximum  
Operational  
Height:  
9.5 m

# swissjib

